



Congratulations on your purchase of an Offshore Angler™ Ocean Master® levelwind reel. This reel was manufactured with the highest quality components and has been extensively tested to ensure that your day on the water is more productive. Please take a moment to familiarize yourself with the performance-enhancing features of this reel before use. This will help you optimize the reel's settings and increase your odds of success. We wish you the best of luck in your future angling adventures!

Reel Specifications

Model	Bearings	Weight (oz./g)	Max Drag (lbs./kg)	Line Capacity mono/braid (lb./yds./kg/m)	IPT	Gear Ratio
OMC4000	3+1	12	14	14/240, 17/170, 20/150 30/400, 50/240, 65/190	25"	5.2:1

- 4-Bearing System
- Powerlock™ Instant Anti-Reverse
- 1-Piece Aluminum Frame
- Machine-Cut Aluminum Spool
- Externally Adjustable Magnetic Braking System

Features & Operations Instructions

1-Pc. Aluminum Frame & Aluminum Spool

The one-piece aluminum frame design enhances strength and durability, allowing for sustained peak performance over time. The spool is made from lightweight aluminum for reduced weight and longer casts. These parts have been anodized to protect from corrosion.

Adjustable Magnetic Braking System

Your reel is equipped with an easy-to-use, externally adjustable magnetic brake system. This system should be used to help eliminate backlash. Simply rotate the dial on the left sideplate to increase or decrease the amount of magnetic force applied to the spool. The more force that is applied, the faster the spool stops spinning.

Powerlock™ Instant Anti-Reverse

Your reel is equipped with our Powerlock instant anti-reverse system. This is a special type of bearing that allows the handle to only turn forward. There is no play in the handle, so you have complete control during the retrieve and no "loose" feeling, which is important during stop-and-go retrieves.

Cast Control Knob

The Cast Control Knob is located on the handle side under the star drag. Its purpose is to apply continuous friction to the end of the spool shaft, assisting the braking system in maintaining the correct spool speed. This helps to prevent backlashes. To set the cast control, tie on your lure and reel it to the tip of the rod. Tighten the knob until it feels snug. Push the thumb bar. Your lure should not move. Hold the rod at a 2 o'clock position and slowly turn the knob counter-clockwise until the lure starts to fall. Let the lure hit the ground and watch the spool. The spool should not spin more than one revolution after the lure hits the ground. If it spins more than one revolution, tighten the cast control knob and repeat the procedure. If the spool does not spin after the lure hits the ground, the cast control is set too tight. Loosen the knob and repeat the procedure.

Star Drag

Your reel has a powerful star drag for pinpoint settings. The Teflon® and stainless steel drag washers provide a smooth even flow of line when a fish surges to prevent the line from breaking. Even when wet, these washers won't slip or grab. The star drag is the star shaped wheel located behind the reel handle. To adjust, simply turn forward to increase drag or turn backward to decrease the amount of drag.

Bait Clicker

A frame-mounted bait clicker provides an audible warning that the fish is taking your line both in free spool and when the spool is engaged.

Bass Pro Shops® Fishing Reels: Limited Warranty

Bass Pro Shops® will repair or replace (at our discretion) any Offshore Angler™ reel which proves to be defective in workmanship or materials within one year from the original date of purchase. You must save your dated sales receipt for warranty validation. This warranty gives you specific legal rights, and you may have other rights which vary from state to state or province to province.

For reels purchased through Bass Pro Shops catalogs or Bass Pro Shops online:

- **For reel replacement only:** Return your reel postage prepaid with your dated sales receipt to the Return Center address listed on your receipt.
- **For reel repair only:** Return your reel postage prepaid with a copy of your dated sales receipt as proof of purchase and warranty validation to the Outdoor World Rod & Reel Repair® address below.

For reels purchased through Bass Pro Shops retail locations:

- **For reel replacement only:** Return your reel (postage prepaid if sending by mail) along with your dated sales receipt to the store from which it was purchased.
- **For reel repair only:** Return your reel postage prepaid with a copy of your dated sales receipt as proof of purchase and warranty validation to the Outdoor World Rod & Reel Repair address below.

Outdoor World Rod & Reel Repair
2300 E. Turner, Suite M
Springfield, MO 65803

This warranty does not cover lost parts, malfunctions, or damage due to abuse, accidents, or normal wear. Failure to clean, lubricate, and provide reasonable and necessary maintenance will void the warranty. Repairs needed to your reel due to abnormal use or modification, or after warranty expiration, are available for a reasonable charge from Outdoor World Rod & Reel Repair, providing the reel is returned postage paid.

Except to the extent prohibited by applicable law, there are no warranties or conditions, express or implied, other than those expressly set out herein. Bass Pro Shops shall not, under any circumstances, be liable for an amount greater than the actual purchase price of the product nor for any special, incidental, or consequential damages suffered or incurred in connection with the product and Bass Pro Shops does not assume, and does not authorize any person to assume for it, any obligation or liability other than those expressly set out herein.

Reel Care And Lubrication

Your new reel is designed to provide years of dependable service. But like any other precision machine, periodic cleaning and maintenance is required for continued peak performance.

Reels made today require both a lightweight oil and grease. Oil and grease should be used sparingly; too much can have a negative impact on reel performance. There are lightweight oils and greases made specifically for fishing reels that can be found at basspro.com

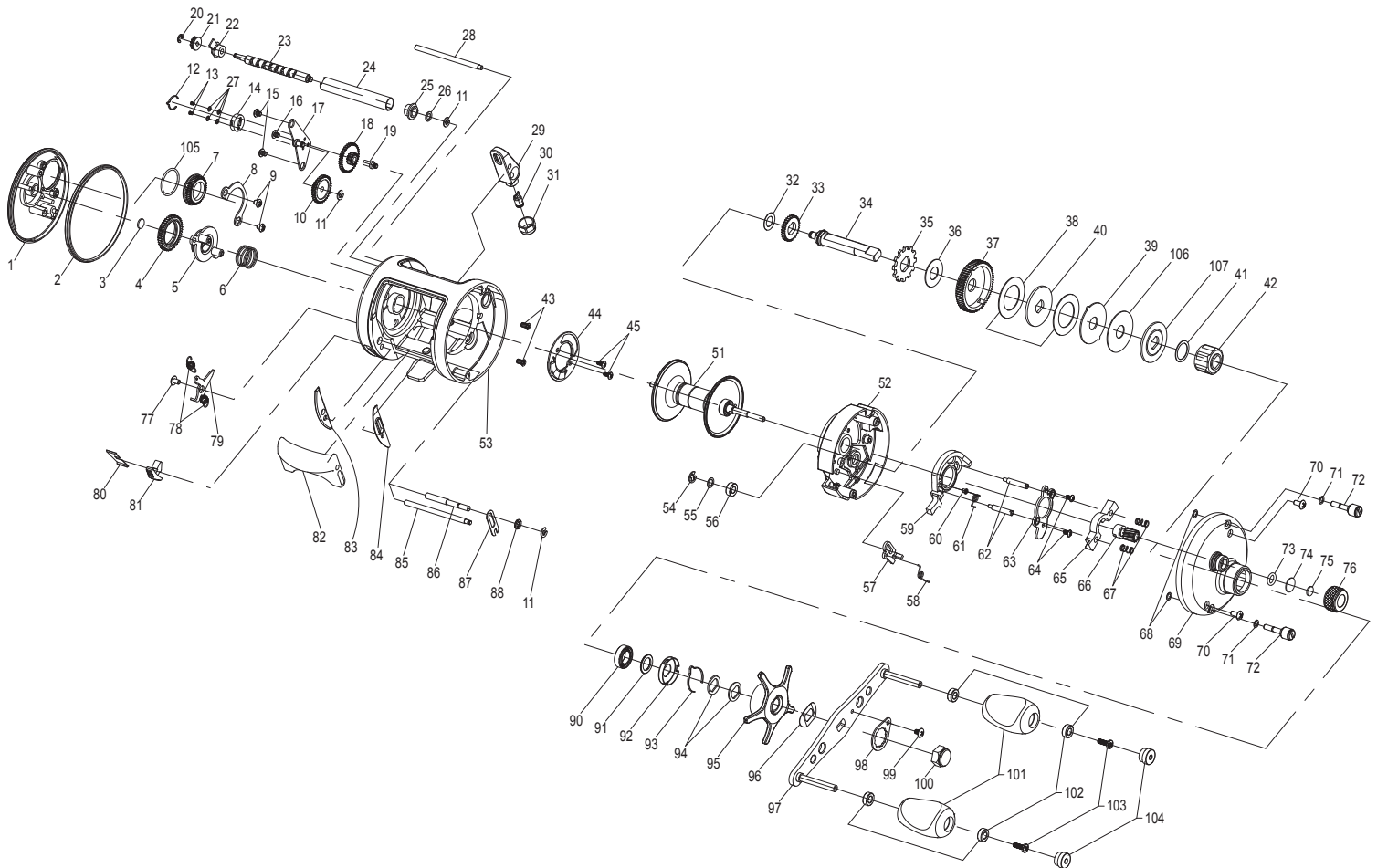
As a rule of thumb, oils should be used to lubricate any moving part on the reel, e.g. ball bearings, bushings, handle joints, bail springs, etc. Grease should be used to lubricate the main drive gear and pinion gear.

We do not recommend using any multipurpose oils. Many of these oils have properties that will attract dirt and dust to the internal parts. This may cause excessive wear and reduce the life of the reel.

After each trip, the reel should be checked for dirt or sand. If it has been exposed to saltwater, the spool should be removed and the entire reel rinsed in freshwater. Dry with a soft cloth and lubricate the reel as described above.

OCEAN MASTER

OMC4000



OCEAN MASTER 4000

Key Name	Key Name	Key Name	Key Name
1 LEFT COVER	28 CARRIER PIN	55 WASHER	82 THUMB LEVER
2 COVER RING	29 LINE GUIDE ASS'Y	56 8.0X4.0X3.0 BUSHING	83 LEFT SPACE
3 RUBBER WASHER	30 LINE GUIDE PAWL	57 RETURN PAWL	84 RIGHT SPACE
4 DIAL BASE GEAR	31 PAWL CAP	58 RETURN PAWL SPRING	85 THUMB LEVER PIN
5 DIAL BASE	32 11.0X6.4X0.2 WASHER	59 PINION YOKE SLIDER	86 SLIDER PIN
6 DIAL BASE SPRING	33 LEVELWIND GEAR	60 SPRING SLEEVE	87 RETAINING WASHER
7 CONTROL KNOB	34 CRANK STEM	61 SLIDER SPRING	88 SPACER
8 CONTROL KNOB RETAINER	35 RATCHET	62 PILLER	90 14.0X8.0X4.0 BALL BEARING
9 CONTROL KNOB SCREW	36 WASHER	63 PAWL RETAINER	91 CRANK WASHER
10 TRANSFER GEAR	37 DRIVE GEAR	64 SCREW	92 CLICK SPRING HOLDER
11 M2.5 E-WASHER	38 WASHER	65 PINION YOKE	93 SPRING
12 CLICK SPRING	39 EARED DRAG WASHER	66 PINION	94 SPRING WASHER
13 SCREW	40 KEY DRAG WASHER	67 SPRING	95 STAR DRAG
14 CLICK SPRING HOLDER	41 TEFLON WASHER	68 O-RING	95 STAR DRAG COVER
15 CONTROL KNOB SCREW	42 OWC ASS'Y	69 RIGHT COVER	95 STAR DRAG INSERT
16 M1.7X2.5 SCREW	43 MC2.6X6.0 SCREW	69 TENSION KNOB BASE	96 CRANK SPRING WASHER
17 TRANSFER GEAR SUPPORT	44 MAGNET PLATE ASS'Y	70 MT2.6X6.0 SCREW	97 CRANK ARM
17 TRANSFER GEAR STUD	45 BT2.0X5.0 SCREW	71 WASHER	97 HANDLE RIVET
18 TRANSFER GEAR	51 SPOOL	72 THUMB SCREW	98 HANDLE NUT LOCKER
19 TRANSFER GEAR STUD	51 SPOOL SHAFT	73 O-RING	99 MT2.6X4.0 SCREW
20 SELF LOCKING WASHER	51 10X5X4 BALL BEARING (2)	74 SPOOL SHIM	100 CRANK NUT
21 SHUTTLE SCREW GEAR	51 WASHER	75 RUBBER WASHER	101 CRANK HANDLE
22 SHUTTLE SCREW BUSHING	51 SPOOL GEAR	76 TENSION KNOB	102 BUSHING
23 SHUTTLE SCREW	51 M2.5 E-WASHER	77 MT2.6X4.0 SCREW	103 MB2.6X8.0 SCREW
24 CARRIER GUIDE	51 SPOOL SHAFT PIN	78 SPRING	104 PLUG
25 SHUTTLE SCREW BUSHING	52 RIGHT SIDE BASE	79 CLICK PAWL	105 O-RING
26 WASHER	53 FRAME	80 SPRING	106 WASHER
27 WASHER	54 M3 E-WASHER	81 PUSH BUTTON	107 KEY DRAG WASHER