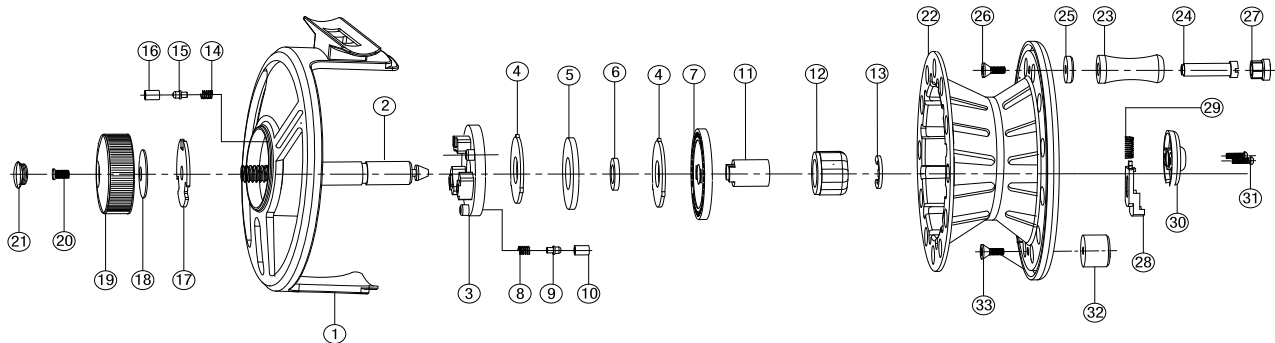


Size: 3-4, 5-6, 7-8



Dogwood Canyon™ FLY REEL



HOW TO CHANGE THE DRAG FROM LEFT- TO RIGHT-HAND WIND

1. Remove the Spool from the reel Frame,
2. Remove the C-Retainer (part #13) with a small screwdriver,
3. Flip the One-way Bearing (part #12) over, and put it back into the original position,
4. Reinsert C-Retainer back to secure the One-way Bearing.

NO	PART NAME	NO	PART NAME	NO	PART NAME	NO	PART NAME
1	BODY	11	ONE-WAY SLEEVE	21	DRAG KNOB MARK	31	PUSH COVER SCREW
2	MAIN SHAFT	12	ONE-WAY BEARING	22	SPOOL	32	BALANCE
3	PLATE SLEEVE	13	C-RETAINER	23	HANDLE KNOB	33	BALANCE SCREW
4	KEY WASHER (2)	14	DRAG CLICK SPRING	24	HANDLE KNOB SHAFT	34	
5	LINING WASHER	15	DRAG CLICK PIN	25	HANDLE BOSS COLLAR	35	
6	LINING WASHER BUSHING	16	DRAG CLICK HOUSING	26	HANDLE SCREW	36	
7	SPOOL CLICK PLATE	17	DRAG PLATE	27	HANDLE KNOB CAP	37	
8	SPOOL CLICK SPRING	18	DRAG SPRING	28	PUSH LEVER	38	
9	SPOOL CLICK PIN	19	DRAG KNOB	29	PUSH LEVER SPRING	39	
10	SPOOL CLICK HOUSING	20	DRAG KNOB SCREW	30	PUSH COVER	40	